

## COP Technical Data

### Low Level Order Picker

---

COP 20

COP-H 10

COP-L 07



In accordance with VDI guidelines 2198 and 3597, respectively, this specification applies to the standard model only. Alternative tyres, mast types, ancillary equipment, etc. may result in different values.

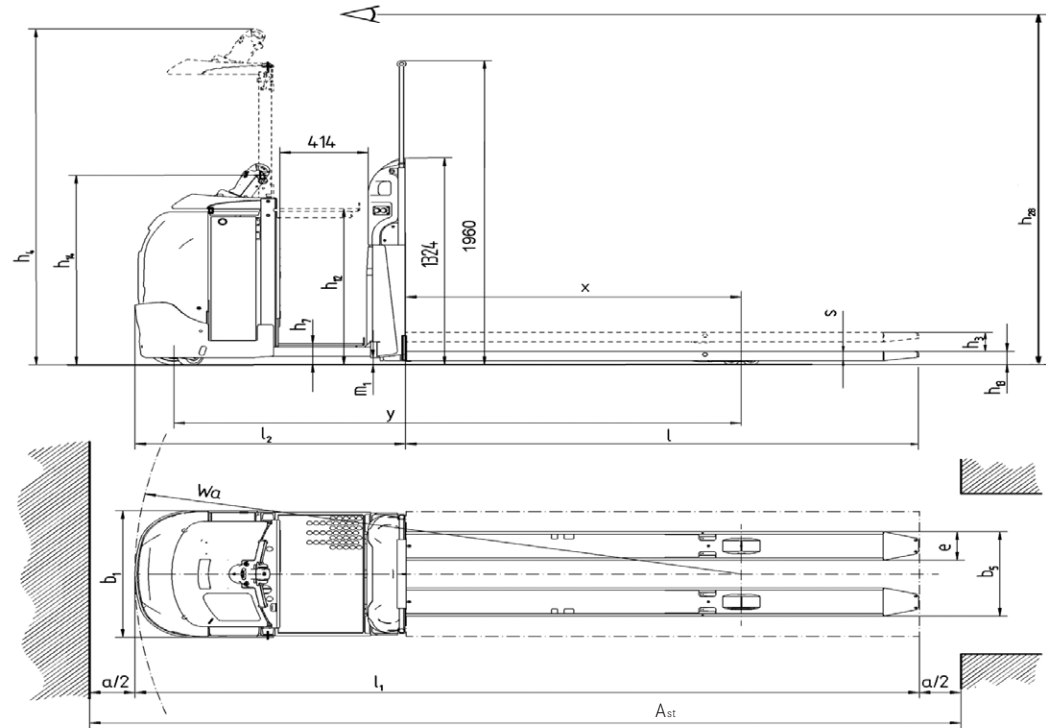
Characteristics	1.1	Manufacturer			STILL				STILL		
	1.2	Manufacturer's model designation			COP 20 Fixed platform	COP 20 Lifting platform	COP-H 10 Fixed platform	COP-H 10 Lifting platform	COP-L 07 Without auxiliary lift/fixed forks	COP-L 07 With auxiliary lift/ fixed forks	COP-L 07 With auxiliary lift/ adjustable forks
	1.3	Drive			Electric		Electric		Electric		
	1.4	Control			Stand-on		Stand-on		Stand-on		
	1.5	Rated capacity/load	Q	kg	2000	2000	1000	1000	700		
	1.6	Load centre distance	c	mm	1200	1200	600	600	600		
	1.8	Load centre	x	mm	1570	1570	857	857	105	100	140
	1.9	Wheel base	y	mm	2558	2558	2062	2062	1210		
Weights	2.1	Tare weight (incl. battery)		kg	1131	1185	1169	1239	1193	1297	1330
	2.2	Axle load with load	Drive end/load end	kg	1079/2052 <sup>2</sup>	1122/2063 <sup>2</sup>	989/1180 <sup>4</sup>	1041/1198 <sup>4</sup>	417/1476 <sup>4</sup>	409/1588 <sup>4</sup>	374/1656 <sup>4</sup>
	2.3	Axle load without load	Drive end/load end	kg	866/265 <sup>3</sup>	909/276 <sup>3</sup>	864/305 <sup>4</sup>	916/323 <sup>4</sup>	821/372 <sup>4</sup>	813/484 <sup>4</sup>	804/526 <sup>4</sup>
Wheels   tyres	3.1	Tyres			Polyurethane		Polyurethane		Polyurethane		
	3.2	Tyre size	Drive end	mm	ø 250 x 80		ø 250 x 80		ø 250 x 80		
	3.3	Tyre size	Load end	mm	ø 85 x 70		ø 85 x 90		ø 120 x 50		
	3.4	Castor wheels		mm	ø 110 x 60		ø 110 x 60		-		
	3.5	Wheels, number (x = driven)	Drive end/load end		1x -2/4		1x -2/2		1x/4		
	3.6	Track width	Drive end	b <sub>10</sub> mm	558		558		-		
	3.7	Track width	Load end	b <sub>11</sub> mm	318 / 358 / 488		370		780		
Dimensions	4.2	Closed mast height	h <sub>1</sub>	mm	-		-		1577		
	4.4	Lift	h <sub>3</sub>	mm	125		745		1040		
	4.5	Height platform raised	h <sub>4</sub>	mm	-	2053	-	2053	2343		
	4.8	Height seat/stand-on (platform)	h <sub>7</sub>	mm	112	148	112	148	160		
	4.9	Tiller height in driving position	min./max.	h <sub>14</sub>	mm	1212		1212		1245	
	4.11	Auxiliary fork lift	h <sub>9</sub>	mm	-		-		-	674	712
	4.14	Stand-on height, raised	h <sub>12</sub>	mm	-	900	-	900	1200		
	4.14.1	picking height (h <sub>12</sub> +1600)	h <sub>28</sub>	mm	2500		2500		2800		
	4.15	Height, lowered	h <sub>13</sub>	mm	85		85		85		45
	4.19	Overall length without load	l <sub>1</sub>	mm	3667		2538		2648	2643	2683
	4.20	Length incl. fork face	l <sub>2</sub>	mm	1267		1388		1498	1493	1533
	4.21	Overall width	b <sub>1</sub>	mm	805		805		810		
	4.22	Fork dimensions	s/e/l	mm	60/182/2400		55/170/1150		50/160/1150	55/160/1150	35/100/1150
	4.25	External fork width	b <sub>5</sub>	mm	520/540/670		540		540		300-680
	4.32	Floor clearance with load beneath mast	m <sub>2</sub>		45		45		45		
4.34	Working aisle width at pallet dim. 1000 x 1200 crosswise (l <sub>5</sub> x b <sub>12</sub> )	A <sub>st</sub>	mm	-		2588		2699	2694	2734	
4.34	Working aisle width at pallet dim. 800 x 1200 lengthwise (b <sub>12</sub> x l <sub>6</sub> )	A <sub>st</sub>	mm	3867		2788		2899	2894	2934	
4.35	Turning radius	W <sub>a</sub>	mm	2837		2245		1395			
Performance	5.1	Driving speed	With/without load	km/h	11/14		11/14		8.5/8.5		
	5.2	Lifting speed	With/without load	m/s	0.04/0.05	0.11/0.21	0.09/0.11	0.2/0.38	0.18/0.26		
	5.3	Lifting speed	With/without load	m/s	0.05/-		0.1/-		0.24/0.24		
	5.7	Climbing capacity	With/without load	%	6/6 <sup>5</sup>		6	6 <sup>5</sup>	-		
	5.10	Service brake, electro-magnetic			electromagnetic		electromagnetic		electromagnetic		
Electric motor	6.1	Drive motor, capacity S2 = 60 min		kW	3		3		3		
	6.2	Lift motor, capacity at S3 = 15%		kW	1.2	1.4	1.2	1.4	2.2		
	6.3	Battery in accordance with DIN 43531/35/36; A, B, C, no			no		no		no		
	6.4	Battery voltage, nominal capacity K <sub>s</sub>		V/Ah	24/465		24/465		24/465		
	6.5	Battery weight ±5% (acc. to manufacturer)		kg	390		390		390		
Other	8.1	Type of drive control			AC control		AC control		AC control		
	8.4	Noise level, driver's ear		dB (A)	<70		<70		<70		

<sup>1</sup> With fully raised forks the value is reduced to 83 mm.  
<sup>2</sup> With operator on the truck at fully raised forks.  
<sup>3</sup> With operator on the truck with forks lowered.  
<sup>4</sup> With operator on the truck.  
<sup>5</sup> Climbing capacity derived from the truck geometry.

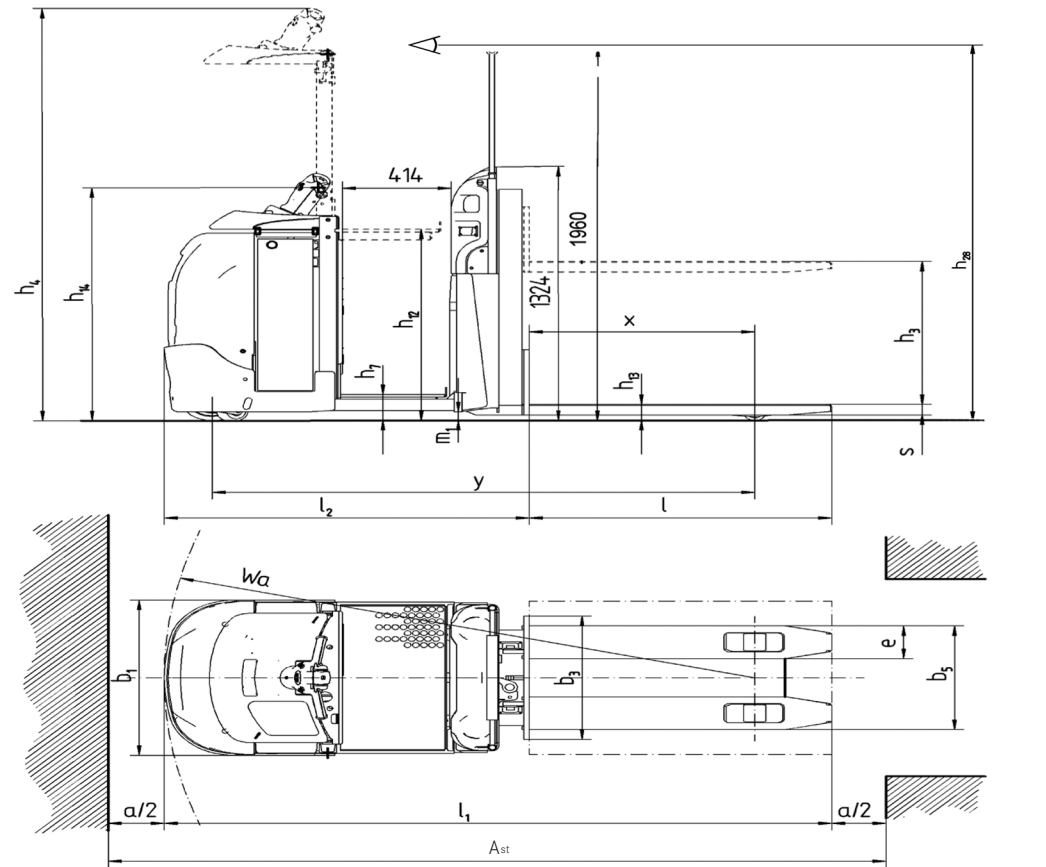
Fork dimensions COP 20

(All values given in mm)						
l	c	y <sup>1</sup>	l <sub>1</sub>	W <sub>a</sub> <sup>1</sup>	x <sup>1</sup>	A <sub>st</sub>
1150	600	1975	2417	2242	975	2667
1450	750	2145	2717	2412	1145	2967
2160	1100	2556	3427	2822	1555	3667
2400	1200	2571	3667	2837	1570	3867
2400	1200	2844	3667	3110	1843	3867
2850	1450	2934	4117	3200	1933	4367

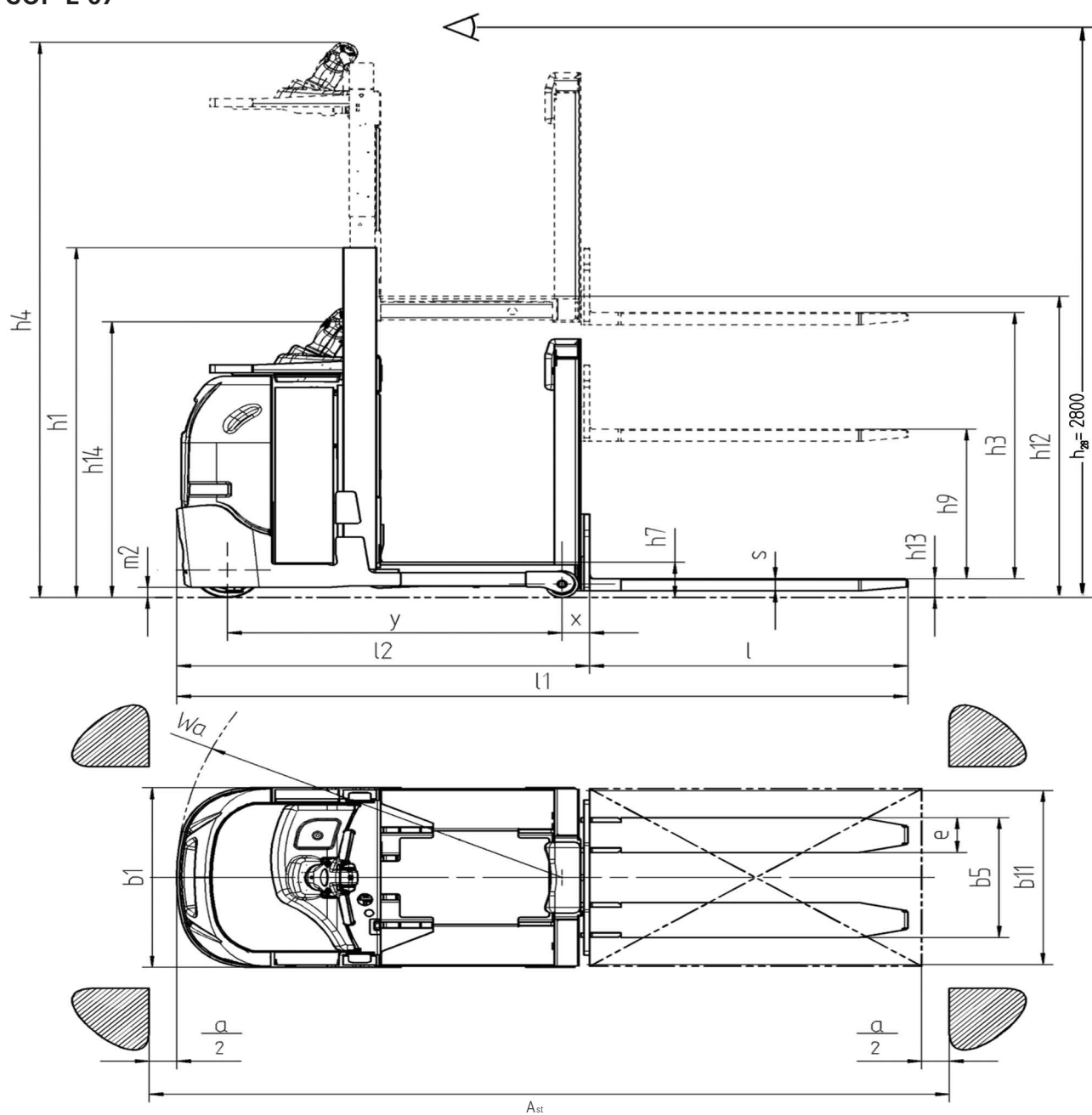
COP 20



COP-H 10



**COP-L 07**



The order pickers of the COP series combine high agility for narrow warehouses with excellent driving dynamics and high productivity also when order picking at first and second level.

### Truck frame

The special drive concept of the COP series was derived from the low lift trucks with a centrally situated drive wheel and strong lateral castor wheels offering perfect traction. This allows the COP to travel at high speeds also when cornering and easily trespass ramps and transitions.

- Its rugged covers are made from resilient plastic that withstand even strong impacts without permanently deforming or breaking.
- The patented initial lift mechanism makes the truck very short providing an outstandingly small turning radius and high manoeuvrability.

### Steering

By standard the COP is equipped with an electric steering system.

- Multi-function cockpit to operate all functions for lifting and driving.
- Automatic curve speed reduction.

### Driver's compartment

The stand-on platform for the driver provides a large space covered with a soft, anti-slip rubber mat at low access height to make mounting and leaving the truck easy and comfortable.

- The ergonomically shaped rear wall offers the driver a comfortable and safe ride also when travelling fast.
- The driver's compartment offers numerous deposit trays for tools and documents.

### Platform lift (option)

To accelerate order picking at higher levels, the COP 20 and COP-H 10 models are available with an optional 900 mm platform lift.

- Simultaneous lifting of the platform and driving as well as the possibility to lower the platform by depressing a foot switch allows maximum turnover performance.
- 170 kg lift capacity and the well dimensioned deposit space in front of the cockpit make the lift platform an indispensable equipment for every day operation and excellent order picking performance.
- The driving speed is automatically adjusted to the current lift height.

### Drive

The 3-kW AC drives ensure:

- high driving dynamics.
- low drive noise.
- energy recuperation to reduce energy consumption.
- no maintenance.

### Battery

The 24-V battery facilitates easy access and can be exchanged for multi-shift operation by crane or optionally over the side by the integrated roller track.

The battery tray provides a capacity for batteries up to 465 Ah.

### Brake

The COP series is equipped with three brake systems:

- Parking and emergency brake  
Emergency brake: electro-magnetic brake closing at each full stop or at depressing the emergency stop button.
- Electric brake: the truck brakes electrically when the driver releases the accelerator switch. During braking, the AC motor functions as a generator and feeds the recuperated energy back into the battery.
- Service brake: combined braking. An innovative system combining the motor brake and the electro-magnetic brake by the patented electronic "eABS" module. The brake closes on release of the "dead man switch" and on releasing the inching button. This system allows efficient braking without blocking the wheels.

### Stability system

The patented castor wheels provide optimum lateral stability when travelling with load as well as when travelling without load. The stability system "IntelliDrive" bases on the combined effectiveness of spiral and pneumatic springs to provide optimum stability in all conditions.

### Options

- Buttons for pedestrian operation in the backrest.
- Additional front bumper.
- Additional paper clip.
- Electric preparation for data terminal.
- Cold store version.

### COP-L 07

The compact and agile COP-L 07 with a stand-on height up to 1200 mm is the perfect choice for order picking at the first and second level.

On request this truck is also available with ergonomic auxiliary lift or adjustable forks.



STILL Materials Handling Ltd  
Aston Way  
Leyland Preston  
PR26 7UX  
Tel.: +44 (0)845 603 6827  
Fax: +44 (0)1772 454668

STILL Materials Handling Ltd  
19 Hennock Road  
Marsh Barton Trading Estate  
Exeter  
EX2 8RU  
Tel.: +44 (0)1392 435151  
Fax: +44 (0)1392 824328  
info@still.co.uk  
For further information please visit:  
[www.still.co.uk](http://www.still.co.uk)



STILL is certified in the following areas: Quality management, occupational safety, environmental protection and energy management.

